

## FITTING INSTRUCTIONS

ADJUSTABLE CANOPY STAYS WITH ADJUSTABLE FRICTION IPA NO. 21167 + 21178, 88 & 90

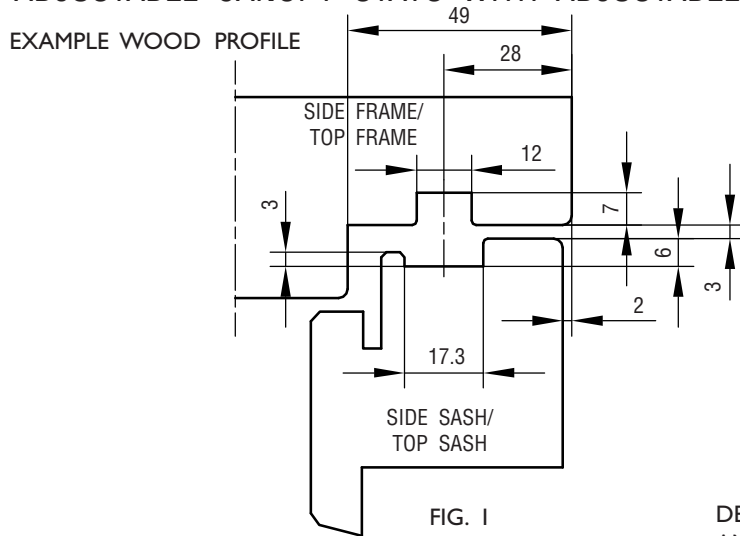


FIG. 1

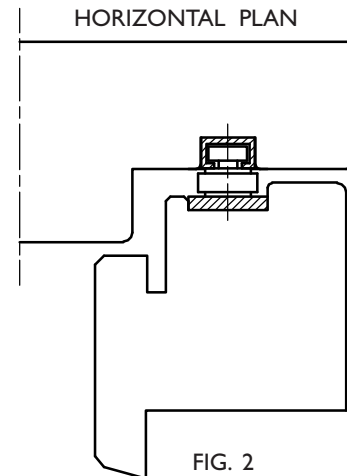


FIG. 2

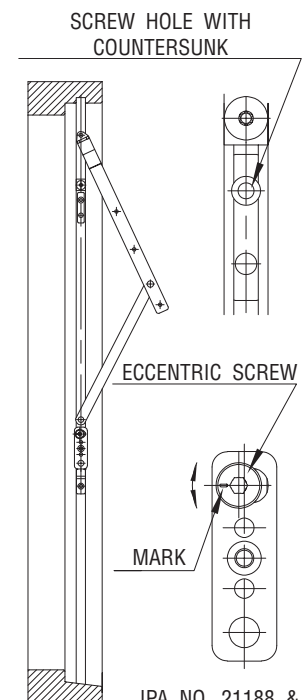
### FITTING:

1. 21167: SIDE FRAME AND SIDE SASH HAS TO BE FITTED WITH FULL LENGTH GROOVES. SEE FIG. 1 + 2.  
21178,  
88 & 90: SIDE/TOP FRAME AND SIDE/TOP SASH HAS TO BE WITH FULL LENGTH GROOVES, SEE FIG. 1 + 2.
2. CLOSE THE FITTING AND PLACE IT IN THE GROOVE OF THE SIDE FRAME.  
21167: PLACE THE FITTING UP AGAINST THE TOP FRAME  
21178,  
88 & 90: PLACE THE FITTING UP AGAINST THE BOTTOM OF THE GROOVE IN THE TOP FRAME. THE BOTTOM SCREWS IS FASTENED, THE FITTING IS OPENED AND THE TOP SCREW IN THE ALUMINIUM RAIL IS FASTENED. THE STOP IN THE ALUMINIUM RAIL SHOULD NOT BE FASTENED UNTIL THE SASH HAS BEEN MOUNTED. THE STOP IS FASTENED THROUGH THE COUNTERSUNK SCREW HOLE. SEE FIG. 3.

DEPENDING ON THE QUALITY OF THE FRAME MATERIAL AND FASTENING POSSIBILITIES OF THE FITTING, WINDOWS WITH HEIGH WEIGHT (TRIPPLE GLASS) CAN SETTLE. IN THIS CASE WE RECOMMEND USING IPA NO. 21178, 88 OR 90.

IPA NO.	21167	21178	21188	21190
MAX. SASH WEIGHT KG	70	70	70	70
MAX. INSIDE FRAME HEIGHT MM	1344	1344	1344	1344
RECOMMENDED SASH WEIGHT KG	40	40	40	50
RECOMMENDED UP TO INSIDE FRAME HEIGHT MM	1044	1044	1044	1344
USE SCREW NO.	4.0	4.0	4.0	4.0

3. PUSH THE SASH INTO ITS PLACE BY INSERTING IT BETWEEN THE FITTINGS GUIDED BY THE GROOVES IN THE SASH, PUSH UNTIL THE SASH HITS THE UPPER BRACKET OF THE FITTING. FASTEN THE SCREWS, START WITH THE SCREW IN THE TOP BRACKET. YOU CAN FREELY CHOOSE BETWEEN THE SCREW HOLES IN THE UPPER BRACKET, ALTERNATIVELY USE BOTH HOLES.  
21167: WHEN THE TOP SASH IS MADE WITH GROOVE ACCORDING TO FIG. 1 USE THE 2 DISTANCE PIECES. ONE IN BOTH ENDS OF THE UPPER SASH GROOVE.
4. NOW THE FRICTION MAY BE ADJUSTED BY MEANS OF THE SCREWS IN THE ALUMINIUM RAILS. BEFORE ADJUSTMENT, PRESS THE SLIDING PART DOWN TO THE STOPS. THE BEST RESULT FOR THE WINDOW MOVEMENT IS ACHIEVED BY EQUAL FRICTION AT BOTH SIDES AND TO SECURE THIS THE SCREWS MUST NEVER BE FASTENED MORE THAN JUST ENOUGH TO HOLD THE WINDOW IN OPEN POSITION. PLEASE NOTE THAT WITH A SMALL WINDOW OPENING, THE FRICTION IS NOT INFLUENCED BY TIGHTENING THE SCREWS HARDER. TO ENSURE THE WINDOW IN STAYING OPENED WITH A SMALL WINDOW OPENING, WE RECOMMEND MOUNTING A SAFETY CATCH.
5. 21188 & 90: THE SASH CAN BE ADJUSTED  $\pm 1.5$  MM UP OR DOWN. ADJUST BY USING A TORX-20 KEY TO TURN THE ECCENTRIC SCREW. BY DELIVERY THE MARK ON THE ECCENTRIC SCREW IS IN A VERTICAL POSITION INDICATING THE 0-POSITION. WHEN THE MARK IS IN HORIZONTAL POSITION IN EITHER TOP OR BOTTOM, THE FITTING IS ADJUSTED TO IT'S MAX OF  $\pm 1.5$  MM.



IPA NO. 21188 & 90

FIG. 3

### MAINTENANCE:

DO NOT PAINT THE ALUMINIUM RAILS. WHEN FITTING - LUBRICATE THE MOVABLE METAL PARTS OF THE MECHANISM WHILE ACTIVATING REPEATEDLY. HEREAFTER LUBRICATE MINIMUM TWICE A YEAR. SEE ALSO SECTION H.