

FITTING INSTRUCTIONS

WINDOW HINGE - ADJUSTABLE IPA NO. 12066+67 & 12074

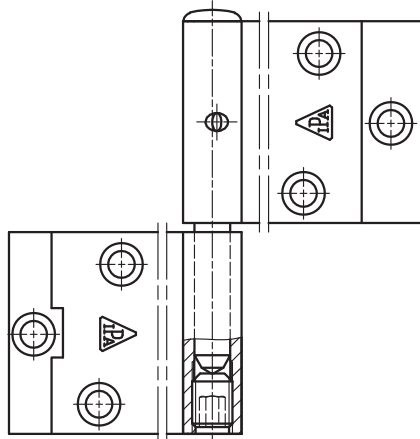


FIG. 1.

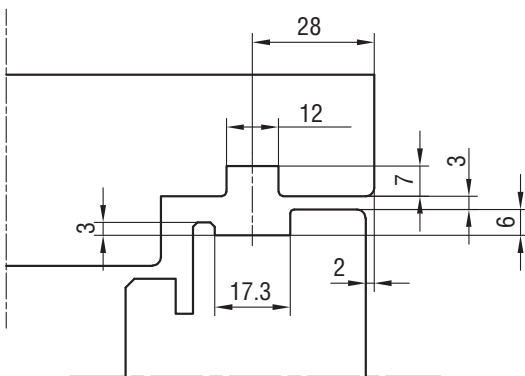


FIG. 2. EXAMPLE WOOD PROFILE

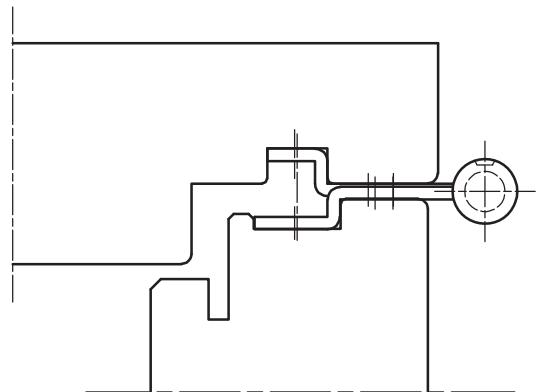


FIG. 3. IPA NO. 12074

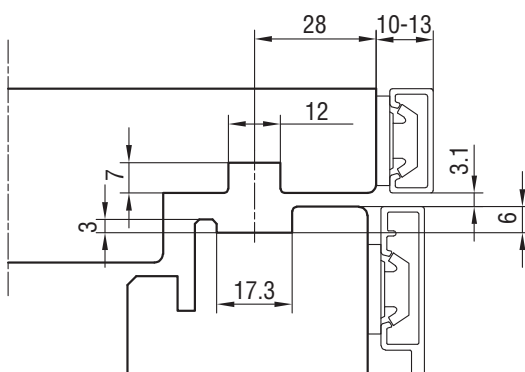


FIG. 4. EXAMPLE WOOD PROFILE

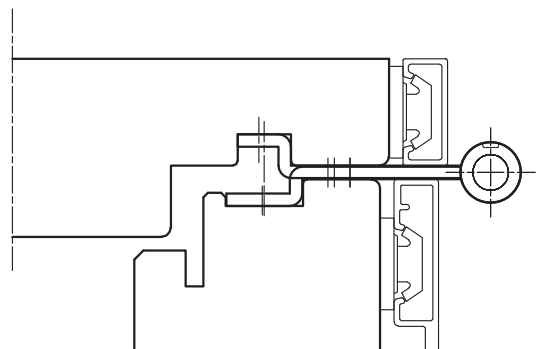


FIG. 5. IPA NO. 12066-67

FITTING:

1. SIDE FRAME AND SIDE SASH IS MADE WITH IPA SYSTEM GROOVES. SEE FIG. 2.
2. MOUNT THE HINGE IN FRAME AND SASH IN THE WANTED POSITIONS - SEE SUGGESTIONS ON PAGE A-05 AND PAGE A-06.

ADJUSTMENT:

VERTICALLY: ADJUST TO WANTED POSITION ON THE SCREW IN THE BOTTOM OF THE HINGE PART - +/-2.5 MM

MAINTENANCE:

TEST THE OPERATION FROM TIME TO TIME. WHEN FITTING - LUBRICATE THE PIVOT/MOVABLE METAL PARTS OF THE MECHANISM WHILE ACTIVATING REPEATEDLY. HERAFTER LUBRICATE MINIMUM TWICE A YEAR. SEE ALSO SECTION H.